

Joyful Catholic Families

# Mass Terms to Review

**Option #2 Pictures**

©Joyful Catholic Families 2018

JoyfulCatholicFamilies.com



**Priest**



**Stole**



**Altar Servers**



**Candle**



**Altar**



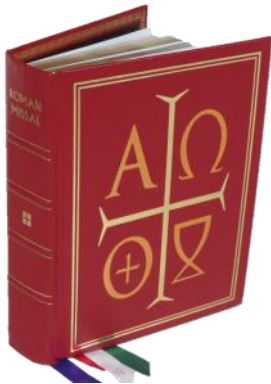
**Ambo**



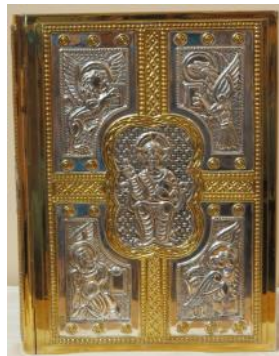
**Processional  
Crucifix**



**President's Chair**



**Roman Missal**



**Book of the  
Gospels**



**Purificator**



**Corporal**



**Chalice**



**Paten**



**Cruet**



**Bells**

**At the next Little Lambs' class, we will be using the following terms.  
If you have time, please review them with your child.**

(A picture of each item is on the back of this sheet.)

- **Priest**
- **Stole** (The long, narrow rectangular vestment worn by the priest)
- **Altar Server** (Altar servers assist the priest during Mass.)
- **Altar** (The table like structure where the Eucharist is celebrated.)
- **Ambo** (Where the readings are proclaimed from during Mass)
- **Processional Crucifix** (A crucifix has Jesus' body on it. A cross does not have Jesus' body on it. The Processional Crucifix is the one carried in at the beginning of Mass and carried out at the end of Mass.)
- **Candle**
- **Book of the Gospels** (This book contains the Gospels that are read by the priest at Mass.)
- **Roman Missal** (This book contains all the prayers the priest says at Mass.)
- **Presider's chair** (The chair the priest sits in.)
- **Bells**
- **Paten** (Bowl/plate that holds the bread that becomes the Body of Christ)
- **Cruet** (Contains the water or wine that is poured into the chalice)
- **Chalice** (Holds the wine that becomes the Blood of Christ)
- **Purificator** (A white cloth used to wipe the chalice.)
- **Corporal** (A white cloth placed on the altar. The paten and chalice are placed on top of the corporal.)